

NEXT BASE

Instruction Manual



RIDE

BikeCam

High Definition Bike DVR with GPS

INTRODUCTION TO USING YOUR BIKECAM

The Nextbase range of cameras have been designed specifically with ease of use in mind, it is recommended NOT to change the default settings, which have been carefully selected to give the best performance for day to day use.

Basic operation.

The BikeCam is set to record video continuously, in files of just 3 minutes in length. There is no gap between each video file. This means that each video file is a manageable size should you need to download and send to your insurance company etc. Eventually your MicroSD card will fill up with video files but don't worry, the camera automatically deletes the oldest file to make space for new recordings. This way you never run out of space and have plenty of riding historical evidence saved. Typically a 16Gb card will store the last 2 hours of riding footage.

The Time and Date are automatically set upon the camera from satellite data, however it will always set Greenwich Mean Time (GMT). For summer months where the clocks are brought forward or for driving in other countries, adjust the time in the General Settings Menu (Time Zoneone / DST) to account for the time difference from GMT by adding or subtracting 1 hour etc, if required.

There are 3 modes of camera operation. Press the MODE button to select accordingly.

Video. The default mode when the camera is turned on, for video recording.

Photo. Allows you to take still photographs.

Playback. Allows you to view recorded video or photographs upon the cameras LCD screen.

Automatic Start / Stop Technology. The BikeCam senses power supplied to the cigarette power socket as soon as the vehicle ignition is turned on and will start to record automatically. When the ignition is turned off, the BikeCam will perform an automatic shutdown process.

1. Tips for capturing best video footage:

- 1.1 Reduce the amount of sky in the picture, by angling the view of the camera towards the road. Too much sky will make the road appear darker due to the automatic exposure compensation.

2. Tips for stable memory card performance:

- 2.1 Periodically reformat the memory card. Every 2-3 weeks we recommend that you reformat the memory card. This will wipe any files from the card and set it up afresh for continued use with your BikeCam.
Of course, you should only do this AFTER you've downloaded any files from the card that you may want to keep, as formatting the card will remove all content. Press MENU twice and choose the Format Card option. Follow the on-screen instructions accordingly.
- 2.2 Switch off the BikeCam before removing the SD memory card, to prevent the chance of damage being caused to the memory card or the files stored upon it, turn OFF the BikeCam before removing or inserting the memory card.

3. Tips for using the playback software:

- 3.1 Copy files from the memory card to your PC and view the files from your PC directly, using the supplied playback software.
- 3.2 Connect to the BikeCam using the free FinalCam application and view the recorded video files upon your smartphone or tablet.

TABLE OF CONTENTS

INTRODUCTION TO USING YOUR BIKECAM.....	03
TABLE OF CONTENTS	04
PRECAUTIONS	05
CAUTIONS ON USING THIS PRODUCT	05
PRODUCT SPECIFICATION	06
PACKAGE CONTENTS	07
PRODUCT FEATURES	07
PARTS & CONTROLS	08
INSTALLATION	10
VIDEO MODE	18
PHOTO MODE	21
PLAYBACK MODE	23
GENERAL SETTINGS MENU	25
FINALCAM (Wi-Fi) APP FOR ANDROID	27
FINALCAM (Wi-Fi) APP FOR iOS	37
MASS STORAGE & PC CAMERA	47
PLAYBACK SOFTWARE FOR WINDOWS	48
PLAYBACK SOFTWARE FOR MAC	56
TROUBLING SHOOTING	62

PRECAUTIONS

Please read this manual carefully before operation and keep it for future reference. It will be helpful should you encounter any operational problem.

CAUTION: To reduce the risk of electric shock, do not perform any servicing other than that contained in the instruction manual unless you are qualified to do so.
Have the unit serviced by a qualified service technician if;
The unit does not seem to operate normally.
The unit exhibits a marked change in performance.

LCD: A Liquid Crystal Display (LCD) screen is a multilayer complex component, containing 345,600 pixels. Pixels can however fail during normal product life. 1 pixel = 0.0003% failure rate, and one pixel failure per year of operation is considered normal and not a cause for concern.

WEEE: **Disposal of Waste Electrical and Electronic Equipment and/or Battery by users in private households in the European Union.**



This symbol on the product or on the packaging indicates that this can not be disposed of as household waste. You must dispose of your waste equipment and/or battery by handing it over to the applicable take-back scheme for the recycling of electronic equipment and/or batteries. For more information please contact your local household waste disposal office.

CAUTIONS ON USING THIS PRODUCT


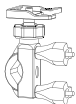
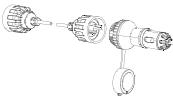
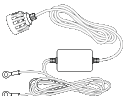



1. Do not obscure the view of the road ahead or impede the deployment of any airbags in the event of an accident.
2. When not in use, please disconnect the power supply from both the 12Vdc outlet of your bike and the device itself. If this not practical, then turn off the BikeCam.
3. Only clean the device with a soft dry cloth, for tough dirt, apply some neutral detergent diluted in 5 to 6 parts water to a soft cloth.
Note that alcohol, thinner, benzene etc could cause damage to the paint or coatings.
4. Avoid making contact with the lenses as damage may be caused.
5. If required clean the glass lens carefully using spectacle lens cleaning fluid on a soft cloth only.
6. The video recordings made by this Digital Video Recorder are intended for personal use only.
7. Publication of the recordings on Youtube, the internet or other methods are subject to the Data Protection Act and the requirements thereof must be adhered to.
If the Digital Video Recorder is to be used within a commercial environment, i.e. bike courier use, then the CCTV regulation apply also, in addition to the Data Protection Act regulations. This includes labelling to identify the use of CCTV is taking place, the omission of Audio recording and informing the relevant authorities of who controls the data.
8. Video playback upon the device which is visible to the rider is prohibited or restricted in some countries or States. Please adhere to these laws.
9. Whilst riding, do not adjust the controls of your device as this is a distraction to riding.

PRODUCT SPECIFICATION

Model Number / Name	NBDVR-RIDE / NEXTBASE RIDE BIKECAM
Power Requirements	5V / 1.5A
Power Supply	12-24Vdc power cable: Fuse Type: 20mm / 2A Output: 5Vdc Hard-wire cable: Fuse Type: 20mm / 2A Output: 5Vdc
Sensor Resolution	14M Pixel (14,000,000 Pixel)
Wide Angle Lens (front) - Type / Angle / Aperture	6G / 110° / F2.0
Recording Resolution (Max.)	1920 x 1080 @ 30fps
Screen Size	1.5"
Screen Resolution	480 (W) X 240 (H) pixels x RGB
Screen Ratio	4:3
Card Reader	MicroSD, Class 6-10, upto 32GB
SD Card (Recommended Type)	8-32GB, Class 10 (30mb/s), for best results use a recognized brand
SD Card Recorded File Capacity (based on default settings)	8GB Micro SD = 60mins of recording 16GB Micro SD = 120mins of recording 32GB Micro SD = 240mins of recording
Recording Format	MOV
WiFi	802.11b/g/n
Internal Battery	Lithium-ion 3.7V / 750mAh (approx. 50mins recording time) Battery design allows the 'Auto Power Off' feature to function in event of power loss upon the bike. It is not intended as an alternative power source to replace the supplied cigarette power adaptor or hard-wire kit.
Unit Dimensions	110 x 52 x 57mm
Unit Weight	168g

PACKAGE CONTENTS

Please check the contents of your BikeCam product.

BikeCam 	Bar Mount 	Power Cable 	Hard-wire Cable 
USB Cable 	Manuals & Software Disk 	Quick Start Guide 	

Product appearance may differ slightly to that shown above.

PRODUCT FEATURES

Thank you for purchasing this NEXTBASE product, in this section we will outline some of the key features that are available with this device.

Wi-Fi Connectivity

Connect the BikeCam to your smartphone, allowing you to control the basic functions of your BikeCam and for viewing recordings on your smartphone or tablet.

'FinalCam' application is required, available for free download from Google Play (Android) and the App Store (iOS).

GPS Logger

GPS co-ordinates, date and time are recorded, the journey can then be viewed on a map using the supplied Windows / Mac playback software.

G Sensor / File Protection

In the event of an impact the device will automatically 'protect' the recording, stopping the file from being over-written.

Individual files can also be 'protected' when viewed within playback mode.

Waterproof (IPx6)

The BikeCam is designed to withstand heavy splashing and rainfall. However, pro-longed exposure is not recommended.

Automatic Start / Stop Technology

The BikeCam senses power supplied to the cigarette power socket as soon as the bike's ignition is turned on and will start to record automatically.

When the ignition is turned off, the BikeCam will perform an automatic shutdown process.

Note:

- Not available if the hard-wire kit is used directly with the battery.

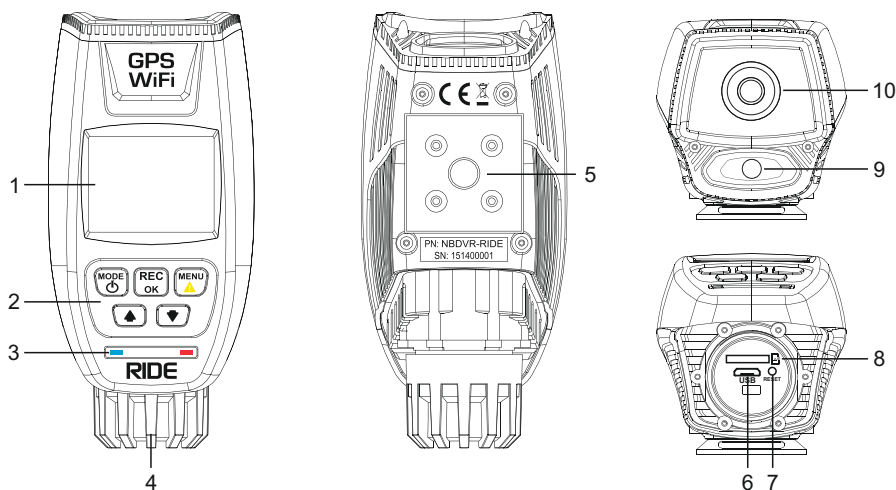
Windows is a registered trademark of Microsoft Corporation in the U.S. and other countries.

Apple, iPhone, iTunes, Mac and iOS are trademarks of Apple Inc., registered in the U.S. and other countries.

Google, Google Maps, Google Play and Android are trademarks or registered trademarks of Google Inc.

'FinalCam' software is created and distributed by Yu Xiping in association with TioTech Company Ltd., Yu Xiping remains the copyright owner.

PARTS & CONTROLS



1. BikeCam screen

2. BikeCam controls



Mode / Power

Mode:

Press to change between video, photo or playback modes.

Power:

Press and hold for 2 seconds to turn on and off the BikeCam.



Record / OK

Record:

Press to start or stop a recording when in video mode, or take a photo when in photo mode.

OK:

Press to confirm selection when in menus.



Menu / File Protect

Menu:

Press to open the menu within current mode, press twice to open the general settings.

File Protect:

Press whilst recording to protect the current file in event of an emergency situation.



UP

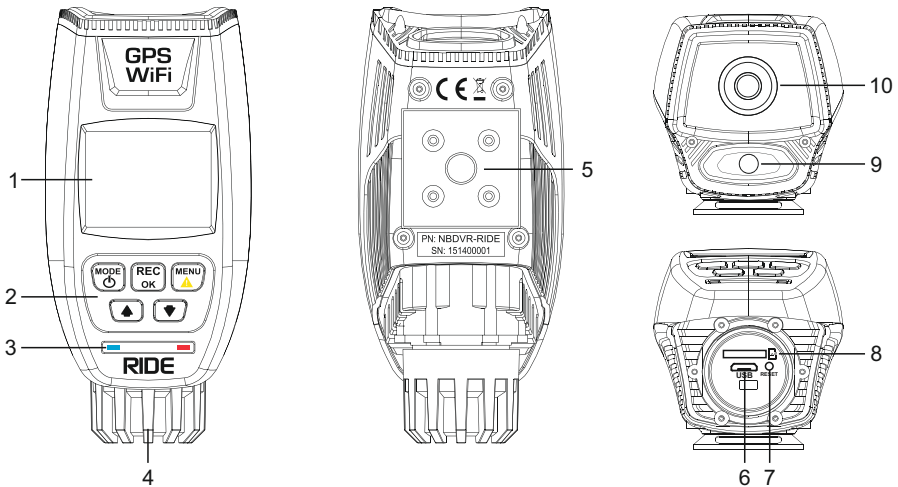
Press to navigate up within menus and to move to the previous file when in playback mode.



DOWN

Press to navigate down within menus and to move to the next file when in playback mode.

PARTS & CONTROLS (CONTD.)



3. LED indicators

Blue = charging / Red = power on / Red flashing = recording

4. End cap

Remove to gain access to the MicroSD slot, Micro USB 2.0 socket and RESET button.

5. Base plate

Used to secure the BikeCam to the supplied Bar Mount, see page 15 for details.

The base plate also has a threaded insert (1/4" UNC type) that can be used to mount the BikeCam with a variety of camera or professional RAM mounts, see page 16 for details.

6. Micro USB 2.0 socket

Connect the supplied 5Vdc power cable or hard-wire cable here.

Note:

- Pull back the sleeve from the power cable connector so you can ensure the MicroSD connector is correctly located BEFORE tightening the power cable to the BikeCam.
- Do not over tighten, or damage may result.

7. RESET button

In the unlikely event the BikeCam becomes unresponsive press the RESET button to restart.

8. MicroSD card slot

9. LED torch

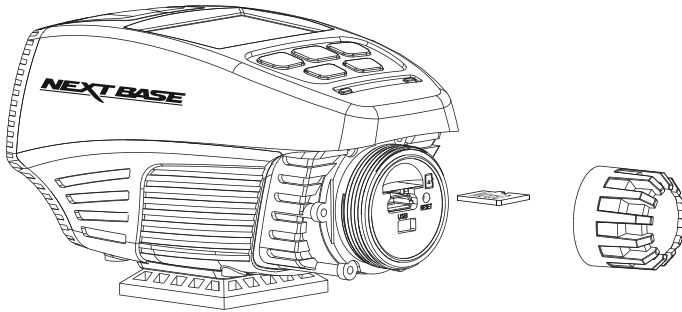
10. Camera lens

INSTALLATION

Please read the information contained within this manual to ensure the installation of the BikeCam is carried out correctly and safely.

1. Insert memory card

Remove the end cap from the rear of the BikeCam and insert a MicroSD card (8-32Gb Class10).



Take care to ensure that the MicroSD card is the correct way round (gold contacts facing down).

Push the memory card until it clicks into place. Use the edge of a small coin (or similar object) to push the memory card in place if required, a second push inwards will release the memory card.

Note:

- Do not remove or insert the memory card when the BikeCam is turned on, doing so may damage the memory card and corrupt any files within.

INSTALLATION (CONTD.)

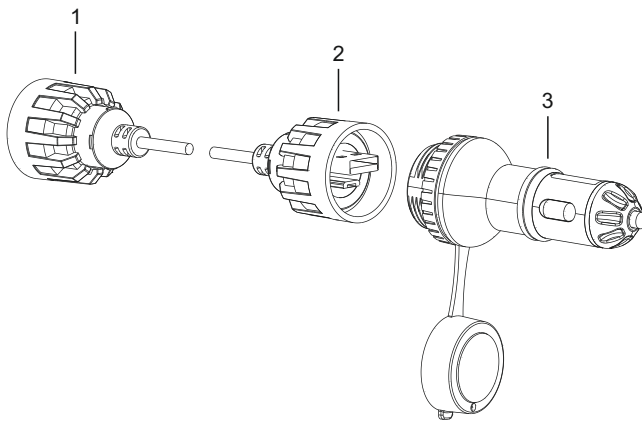
2. Power the BikeCam

The BikeCam is supplied with two types of power cable, a standard 12Vdc power cable (cigarette plug) and a 12Vdc hard-wire cable. Both convert 12Vdc down to the required 5Vdc to operate your BikeCam correctly.

Choose the preferred power cable to best suit your needs.

Standard power cable:

For use with a 12-24Vdc outlet typically found in vehicles and some motorbikes.



1. Waterproof connector for BikeCam

Before connecting the power cable to the BikeCam, pull back the adaptor threaded housing to expose the Mini-USB connector and locating lug. Make sure these are both correctly aligned with the BikeCam sockets and then insert, re-locate the adaptor threaded housing and tighten, finger tight only.

2. Waterproof connector for the supplied car adaptor

Remove the dust-cover and then follow same procedure as described above.

3. 12-24V cigarette plug adaptor for use with vehicle's 12-24Vdc output.

The adaptor uses a 'rubber grommet' to ensure a water-tight fit between the adaptor and socket. There are two alternatively sized grommets supplied with the BikeCam, if required remove the original grommet and replace, to ensure a moisture proof and secure fitting.

Note:

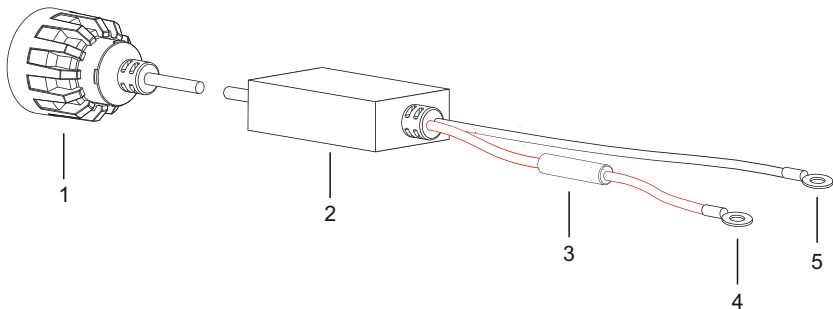
- The cigarette plug adaptor is fitted with fuse (2A 20mm) in order to protect the BikeCam and power source from damage as a result of voltage / current surges, short circuit, cable damage or product failure.

The fuse is user-replaceable by unscrewing the end-cap, take care when removing the end-cap as there is a spring within the assembly. Replace the fuse and re-assemble.

INSTALLATION (CONTD.)

Hard-wire power cable:

For use when a 12-24Vdc outlet is not available, or when a permanent installation is required.



1. Waterproof connector for BikeCam

Before connecting the power cable to the BikeCam, pull back the adaptor threaded housing to expose the Mini-USB connector and locating lug. Make sure these are both correctly aligned with the BikeCam sockets and then insert, re-locate the adaptor threaded housing and tighten, finger tight only.

2. 12-24Vdc to 5Vdc convertor

The converter changes the 12-24Vdc power supply into 5Vdc output, as required by the BikeCam.

It also has the function of protecting both the BikeCam and power source (motorbike) from over-voltage, over-current, over-temperature and short-circuit.

3. In-line fuse holder

The hard-wire cable is fused to protect the BikeCam and power source from damage as a result of voltage / current surges, short circuit, cable damage or product failure.

The fuse (2Amp 20mm) is user-replaceable, unscrew the housing, replace the fuse and re-assemble.

4. Positive (+) ring terminal on red cable

Positive ring terminal (6mm inner diameter), for connection to the positive pole on the battery.

5. Negative (-) ring terminal on black cable

Negative ring terminal (6mm inner diameter), for connection to the negative battery pole or motorbike chassis to ground the hard-wire cable.

Note:

- The hard-wire power cable is fitted with fuse (2A 20mm) to protect the BikeCam and power source from damage as a result of voltage / current surges, short circuit, cable damage or product failure.

The fuse is user-replaceable by unscrewing in-line fuse housing, replace the fuse and re-assemble.

See next page for hard-wire kit installation instructions.

INSTALLATION (CONTD.)

Hard-wire power cable installation:

These instructions provide the necessary information to install the hard-wire cable properly and safely. Before beginning the installation process, please read these instructions carefully.

The hard-wire cable has been supplied with ring terminals to allow quick and easy connection directly to the motorbikes battery.

Planning for the 2.5m long cable is important, the cabling has sufficient length to allow the black box (12-24Vdc to 5Vdc converter) to be placed in an area which is NOT exposed to rain directly i.e. under the seat, under cowlings or in the headlight.

Switch off the ignition and ensure the motorbike is stable, before work commences upon it.

If in any doubt, please contact a vehicle technician prior to starting installation.

Step 1: Running the hard-wire cable from the BikeCam to the battery

- 1.1 Starting from the BikeCam connector route the cable towards the battery. Making sure there is sufficient cable to connect and or adjust the BikeCam, once installation is complete.



Image for illustration purposes only.

- 1.2 Tidy any excess cable using cable clips and secure the cable to a convenient location to prevent rattles.

BIKE INSTALLATION (CONTD.)

Step 2: Connecting the hard-wire cable to the battery

- 2.1 Connect the positive (red) ring terminal to the positive (+) pole of the battery.
- 2.2 Connect the negative (black) ring terminal to the negative (-) battery pole or to the motorbike chassis to ground the hard-wire cable.



Image for illustration purposes only.

Warnings:

- Protect yourself from an electric shock:
When connecting the hard-wire kit to the battery, use a screwdriver or spanner with an insulated handle.
Handle any cables connected to the battery by their insulated areas only.
- Danger of explosion:
Ensure that the positive terminal connection cable does not come into contact with a fuel line (e.g. petrol line).
- Danger of chemical burns:
Protect your eyes and skin against chemical burns caused by acid (sulphuric acid) upon contact with the battery.
Wear acid-resistant glasses, clothing and gloves
If your eyes or skin come into contact with sulphuric acid, rinse the affected part of the body with plenty of clear running water and seek immediate medical assistance!
- Failure to follow these safety precautions and instructions could result in damage to the product or vehicle, which will not be covered under the manufacturers warranty.:
- Do not bypass the in-line 2A fuse.
- Fit the Hard-wire cable away from any excess heat, e.g. the engine or exhaust.
- Failure to use the supplied installation parts and/or hardware will void the product warranty.
- Failure to connect the product as instructed, may result in discharge of the vehicle battery.

Should you experience any difficulties during installation please do not hesitate to contact our technical support team: support@nextbase.co.uk

INSTALLATION (CONTD.)

Mounting

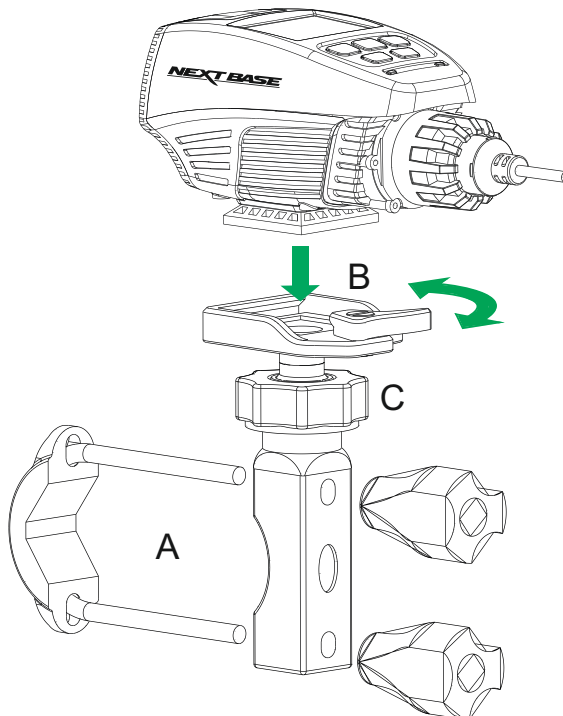
The BikeCam is supplied with a bar mount, this is designed to allow the quick and easy installation of the BikeCam without the need for any tools or technical knowledge.

The BikeCam also has a threaded insert (1/4" UNC type) in the base plate, this can be used to mount the BikeCam with a variety of camera or professional RAM mounts that are readily available.

Bar Mount:

The bar mount is easy and quick to install, simply follow the instructions given below.

- A) Release the U Bolt clamp, locate mount upon a suitably size bar and re-tighten thumb screws.
- B) Gently open the sprung clip 90 degrees and lower the BikeCam onto the mount, ensuring that it is engaged fully.
Push the clip back through 90 degrees (to the end stop), making sure the BikeCam is securely attached to the mount.
- C) Release the locking ring in order to adjust the final position of the BikeCam, tighten the locking ring to fix position.



INSTALLATION (CONTD.)

Advanced RAM® mounting system:

When using the BikeCam with a motorbike, it is recommended to use a professional RAM mounting system. The system is readily available to buy online, simply enter the given part numbers into your search engine.

The base plate of the BikeCam has a threaded insert to attach the RAM fitting (PN: B-366U).

Follow the instructions supplied with the RAM fittings to complete the installation to ensure the best results.

The recommended RAM mount system comprises of three parts, as shown below.



PN: B-366U



PN: B-201A



PN: B-231ZU

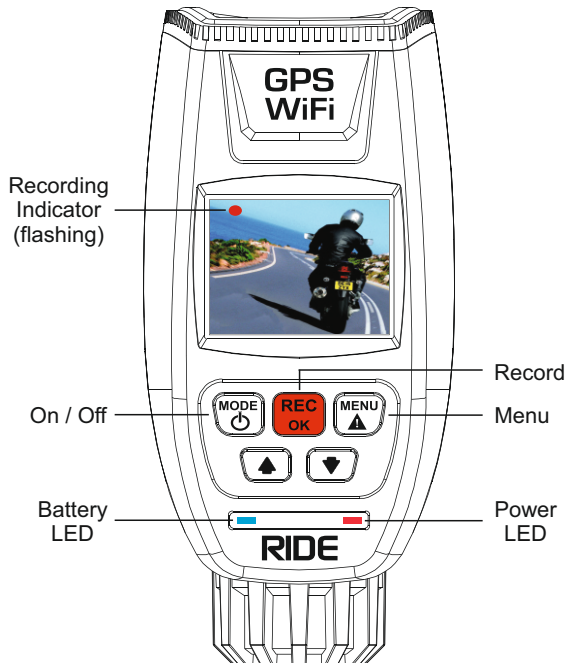
Notes:

- When using RAM mount PN: B-366U above, please use a 1/8" hex key to lower the protruding thread to a minimum amount, in order to avoid damage to the base of the camera.
- To ensure a secure fitting between the BikeCam and the RAM ball fitting (PN: B-366U) a suitably sized 'star washer' is required. This will prevent loosening of the fitting due to vibration.

INSTALLATION (CONTD.)

5. Using the BikeCam

Please see below for a guide to the basic operation of your BikeCam.



On / Off button

Press and hold for 2 seconds to turn the BikeCam on and off.

Record / OK Button

Press to start or stop a recording.

Menu

Press to open the Video menu, press twice to open the General Settings menu.

Battery LED

Indicates when the BikeCam is charging.

Power LED

Indicates when the BikeCam is powered on, flashes when BikeCam is recording.

Recording Indicator

Appears in the top left corner of BikeCam screen, when a recording is in progress

VIDEO MODE

The information given below explains the various items that are displayed on the screen when your BikeCam is in Video mode, some items will only be displayed once the relevant function has been selected within the Video menu, as described below.



1. Time Lapse: displays the time lapse setting.
2. WDR: remains on screen permanently as the BikeCam utilises WDR technology.
3. Recording: appears on screen and flashes red when a recording is in progress.
4. Mode: indicates the BikeCam is in Video mode.
5. Resolution: displays the current resolution.
6. Video Length: displays the length of the individual recordings (minutes).
7. Exposure: displays the exposure level.
8. Microphone: Indicates whether audio recording is on or off.
9. Power: displays power source being used (external or battery).
10. GPS: the icon will flash whilst the BikeCam locates satellites. Once a stable signal is received, the icon will stop flashing and remain on screen.
11. White Balance: displays the white balance setting.
12. HUD Speed & Compass icon: Shown on screen when function has been turned on
13. Time: current time.
14. Date: current date.
15. Recording Duration: displays the length of the current recording.
16. Memory Card: indicates whether a memory card is present.
17. Protected File: shown on screen when a video file has been protected by activation of the internal G Sensor or by pressing the file protect button.

See the next page for full details of the options available within Video mode.

VIDEO MODE (CONTD.)

Video settings menu

The Video settings menu is accessed by pressing the MENU button whilst in Video mode. Use the UP and DOWN buttons to highlight setting and press the OK button to enter the options screen.

Select the required option and press OK to confirm, press MENU again to return to video mode.

Note:

- Menus are not accessible during recording. Stop recording firstly to access the menu.

1. Resolution

Select recording resolution, this will increase or decrease the quality of the recorded video.
Default Setting: 1080P

2. Exposure

Select exposure, used to adjust exposure level for different light conditions.
Default Setting: 0

3. White Balance

Adjust the white balance for different light conditions.
Default Setting: Auto

4. Record Audio

Turn On / Off audio recording.
Default Setting: On

5. Date Stamp

Turn On / Off the date stamp shown on recorded files.
Default Setting: On

6. Speed Stamp

Turn On / Off the Speed Stamp shown on recorded files.
Default Setting: On

7. NEXTBASE Stamp

Turn On / Off the NEXTBASE Stamp shown on recorded files.
Default Setting: On

8. Video Length

Select duration of recording length for the individual video files, the BikeCam will fill the SD Card then loop back to the beginning, overwriting the oldest files (unless protected).
Default Setting: 3 Minutes

9. G Sensor

Turn Off or adjust the sensitivity of the G Sensor, it is the G Sensor that detects forces which will automatically protect the current recording in event of a collision.
Default Setting: Middle

VIDEO MODE (CONTD.)

Video settings menu continued.

10. GPS Stamp

Turn On / Off both the GPS co-ordinates and speed stamp that are shown on recorded files. When a recording is viewed using the Driving Recorder Player the GPS co-ordinates, speed information and map location remain available.

Default Setting: On

11. HUD Speed & Compass

When turned on, the screen will display current speed and a compass after the selected period of time, press any button to return to normal viewing, this function is only available when a GPS connection is present.

Default Setting: Off

11. Speed Units

Select whether to record and display speed in KMH or MPH.

Default Setting: MPH

12. Time Lapse

Turn on the Time Lapse function, frames will then be recorded at a lower rate than real time. When replayed the time appears to be moving faster.

Default Setting: Off

13. Number Plate

Enter the registration number for your bike, this will then be shown on the video file.

The default settings have been carefully selected to allow you to use the BikeCam without the need to change any settings.

Note:

- Within the SETUP menu which is accessed by pressing the MENU button twice, there is a 'Default Settings' option to allow you to reset the BikeCam to the factory defaults, if required.

PHOTO MODE

The information given below explains the various items that are displayed on the screen when your BikeCam is in Photo mode, some items will only be displayed once the relevant function has been selected within the Photo menu, as described below.



1. Memory Card: indicates whether a memory card is present.
2. Quality: displays the current image quality.
3. WDR: remains on screen permanently as the BikeCam utilises WDR technology.
4. Mode: indicates the BikeCam is in Photo mode.
5. Resolution: displays the current resolution.
6. Timer: displayed on screen when self-timer is selected from within the Capture Mode options.
7. Exposure: displays the exposure level.
8. ISO: displays the current ISO setting.
9. Power: displays power source being used (external or battery).
10. White Balance: displays the white balance setting.

See the next page for full details of the options available within Photo mode.

PHOTO MODE (CONTD.)

Photo settings menu

The Photo settings menu is accessed by pressing the MENU button whilst in Photo mode. Use the UP and DOWN buttons to highlight setting and press the OK button to enter the options screen.

Select the required option and press OK to confirm, press MENU again to return to photo mode.

1. Image Size

Select image size, this will increase or decrease the size of the photographic image
Default Setting: 8M

2. Colour

Adjust the colour effect of the photographic image.
Default Setting: Normal

3. Capture Mode

Turn On / Off the timer function, when this feature has been turned on, the BikeCam will take a photo the selected period of time after the OK button has been pressed.
Default Setting: Single

4. White Balance

Adjust the white balance for different light conditions.
Default Setting: Auto

5. ISO

Adjust the ISO setting, the brighter the conditions the lower the ISO required.
Default Setting: Auto

6. Exposure

Select exposure, used to adjust exposure level for different light conditions.
Default Setting: 0

7. Date Stamp

Turn Off the date & time stamp shown on photographs taken. Can also change to date only.
Default Setting: Date & Time

8. Image Quality

Increase or decrease the quality of the photographic image.
Default Setting: High

The default settings have been carefully selected to allow you to use the BikeCam without the need to change any settings.

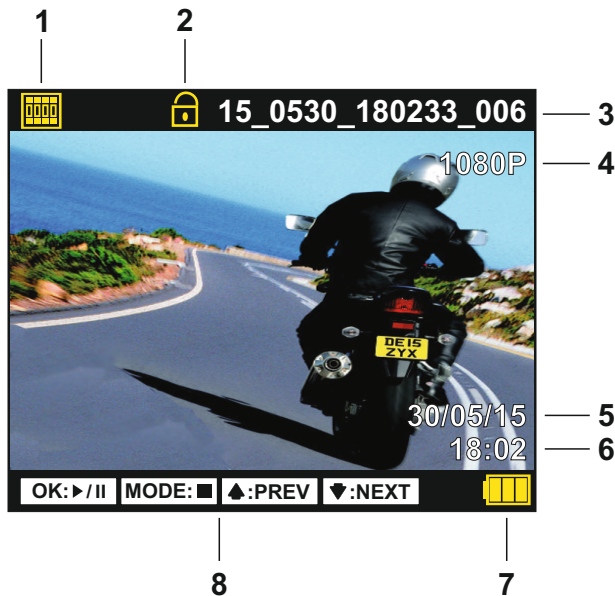
Note:

- Within the SETUP menu which is accessed by pressing the MENU button twice, there is a 'Default Settings' option to allow you to reset the BikeCam to the factory defaults, if required.

PLAYBACK MODE

The information given below explains the various items that are displayed on the screen when your BikeCam is in Playback mode.

Video Playback



1. Video: indicates the BikeCam is displaying a video.
2. Protected File: indicates that the video file is protected.
3. File Number: displays current file number.
4. Resolution: displays the resolution that current video was recorded in.
5. Date: displays date of recording.
6. Time: displays start time current file was recorded.
7. Power: displays power source being used (external or battery).
8. Playback controls: use the BikeCam buttons as described below:



Press the OK button to play / pause.



Press the MODE button to stop playback.



Use UP button to select the previous file and to rewind during playback.



Use DOWN button to select the next file and to fast forward during playback.

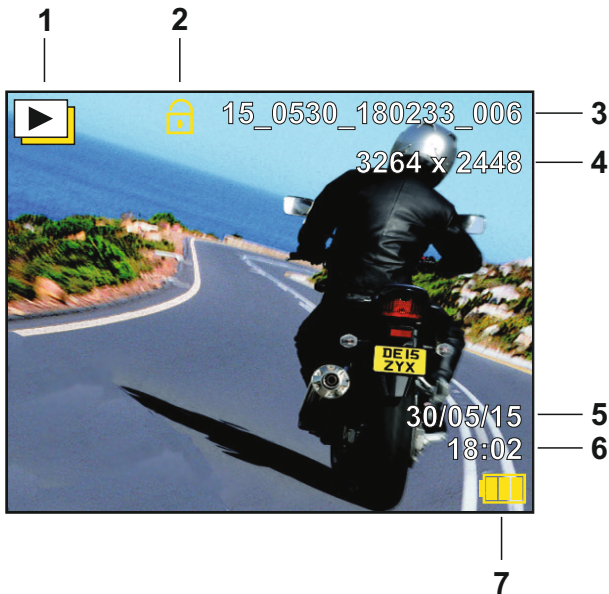
Recommended PC playback software, required for Windows when an internet connection is unavailable: VLC Media Player (free download from www.videolan.org/vlc)

See the next page for details of the options available within Playback mode.

PLAYBACK MODE (CONTD.)

The information given below explains the various items that are displayed on the screen when your BikeCam is in Playback mode.

Photo Playback



1. Photo: indicates the BikeCam is displaying a photo.
2. Protected File: indicates that the photo file is protected.
3. File Number: displays current file number.
4. Resolution: displays the resolution that current photo was recorded in.
5. Date: displays date photograph was taken.
6. Time: displays time photograph was taken.
7. Power: displays power source being used (external or battery).

Playback options menu

The options menu is accessed by pressing the MENU button whilst in Playback mode. Use the UP and DOWN buttons to highlight option and press the OK button to enter the sub-menu.

Select the required option and press OK to confirm, press MENU again to return to playback mode.

1. Delete Files

Used to delete the current file, also available is the option of deleting all files.

2. Protect Files

Used to lock or unlock the current file, also available is the option of locking / unlocking all the files.

3. Slide Show

Used to start a slide show of images stored on the SD card, press the Menu button to exit the slide show.

GENERAL SETTINGS MENU

The General settings menu is accessed by pressing the MENU button twice. Use the UP and DOWN buttons to highlight setting and press the OK button to enter the options screen.

Select the required option and press OK to confirm, press MENU again to return to the original starting mode.

1. Wifi

The Wi-Fi function allows you to view videos whilst recording, adjust the settings, control the basic functions (record, play, pause, etc.) and playback videos directly to your smartphone or tablet.

Default Setting: Off

See pages 27 for instructions

2. Format SD Card

Format the inserted memory card, this will delete all content.

A good practice fortnightly to ensure your SD card performs to it's full potential.

3. Language

Select preferred language, options available are as follows -

English, Français, Español, Nederlands, Norsk, Suomi, Svenska, Dansk

Default Setting: English

4. Date / Time

Adjust the date / time as required using the OK button to toggle through fields, use the UP and DOWN buttons to set variables.

Note:

- The time will automatically update once a GPS satellite signal is received, so remember to adjust for location or summer time, as below.

5. Time Zone / DST

The Time and Date is automatically set from the satellite signal, but can be adjusted dependant upon your Time Zone (country) or whether Daylight Savings Time (DST) is operational.

Default Setting: GMT

6. LED Torch

Turn on the LED light for use as a torch, if required.

7. Beep Sound

Turn Off / On the beep sound, note if Beep is turned off the audible low-battery warning will also be disabled.

Default Setting: On

8. Screen Standby

Turn on the Screen Saver function, this will shut down the screen after a period of inactivity. Press any button to re-activate the display.

Default Setting: Off

9. Version

Display the version number of your device's software.

GENERAL SETTINGS MENU (CONTD.)

Continued from previous page.

10. Default Settings

Reset the device to the default settings.

11. Auto Power Off

Adjust the timing of the Auto Power Off function, this can be used to continue recording in event of loss of power within in the vehicle.

Default Setting: 10 Seconds

The default settings have been carefully selected to allow you to use the BikeCam without the need to change any settings.

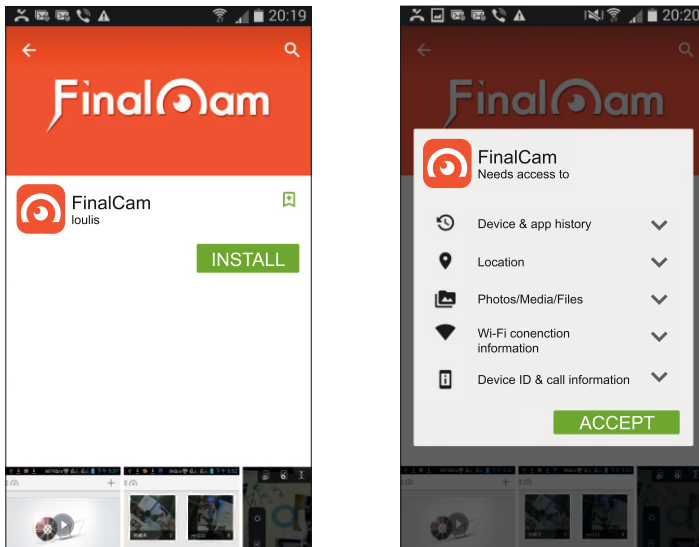
FINALCAM (Wi-Fi) APP FOR ANDRIOD

The Wi-Fi function allows you to use your smartphone to view videos during recording, adjust the BikeCam settings, control the basic functions (record, play, pause, etc.) and playback videos directly to your smartphone or tablet.

The FinalCam App is available for free download from Google Play for Android smartphones.

Installing the App on an Android smartphone:

Open Google Play on your Android smartphone and search for the 'FinalCam' App, tap on 'Install' and then 'Accept'.



Once installed, the FinalCam App will now be available on your home screen of your phone.

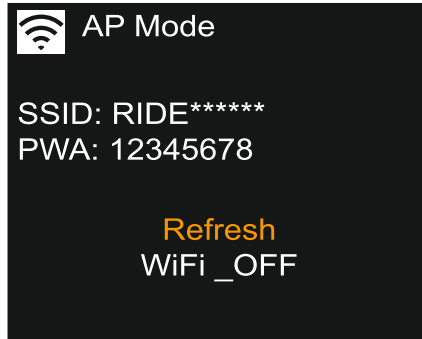


FINALCAM (Wi-Fi) APP FOR ANDRIOD (CONTD.)

Turn on the BikeCam Wi-Fi

To turn on the Wi-Fi function on the BikeCam, go to the General Settings menu (press menu twice), select 'Wi-Fi' and press OK. The 'On' option will be highlighted, press the OK button to confirm.

The menu window will close and the 'AP Mode' (Access Point Mode) window will open, as shown below.



This screen gives the name of the BikeCam SSID (network name): 'RIDE*****' and also the password: 12345678.

Note:

- Both the network name and password can be changed using the FinalCam App, see page 32 for details.

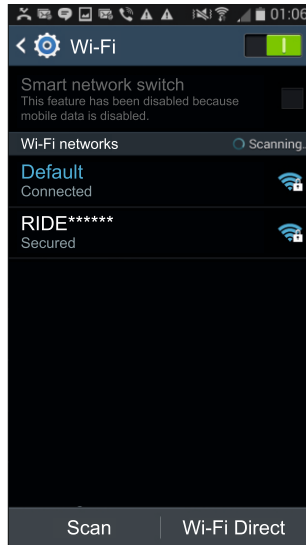
The BikeCam can now be seen as a Wi-Fi network by your phone as 'RIDE*****'.

To exit WiFi mode and resume normal BikeCam use, simply use the down button on the BikeCam to highlight 'Wi-Fi_OFF' and press OK.

FINALCAM (Wi-Fi) APP FOR ANDRIOD (CONTD.)

Connect your phone to the BikeCam

To connect your phone to the BikeCam open the Wi-Fi connections menu on your phone, the BikeCam will be shown in Wi-Fi networks list as 'RIDE*****'.



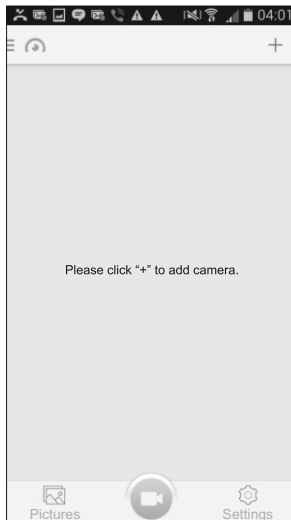
Tap on the 'RIDE*****' and when prompted enter the password '12345678'. Once successfully connected the 'WiFi Connected' window will appear on the BikeCam screen, as shown below.



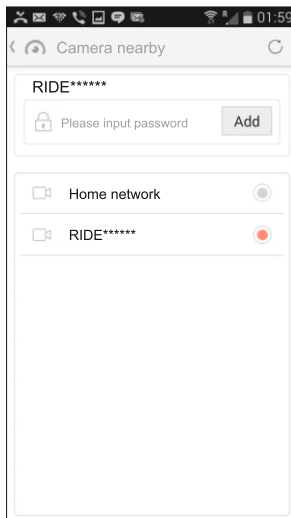
FINALCAM (Wi-Fi) APP FOR ANDRIOD (CONTD.)

Using the FinalCam App

Open the App by tapping on the FinalCam button on your phone, the first time the App is opened the 'Please click "+" to add camera' screen will appear, see image below.



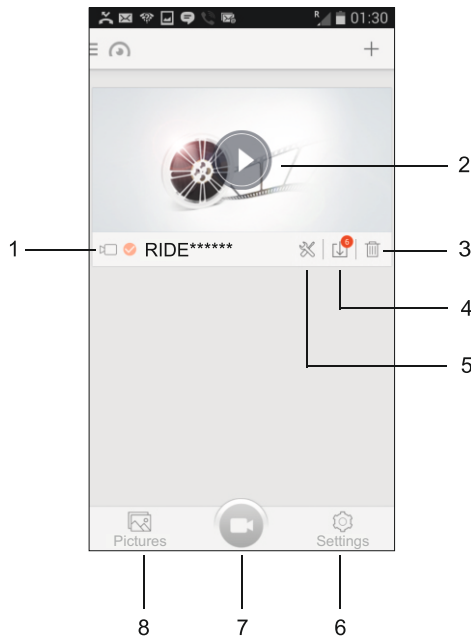
Tap on the '+' button, select 'RIDE*****' from the available networks, as shown below.



Enter the password '12345678' and tap 'Add', the live video screen will appear. Press back on your smartphone to go to the FinalCam home screen, as shown on next page.

FINALCAM (Wi-Fi) APP FOR ANDRIOD (CONTD.)

The key below describes the various information, functions and features available within the FinalCam home screen.



1. Camera name
2. Open camera
Tap here to control the BikeCam.
3. Remove camera
Tap here to remove the BikeCam from the FinalCam App.
4. Recordings
Tap here to view the video files currently stored on the BikeCam's memory card. To playback a recording on your phone you will need to download the video file from the BikeCam, to do this simply tap on the preview window. The download will start immediately to your smartphone.

Multiple files can also be downloaded, tick the files for download and then tap the download icon in the bottom left of the screen. However this is not recommended as transfer time would be long.

Note:

- Downloading files to the FinalCam App will remove the files from the BikeCam, so they can be viewed on your smartphone directly thereafter.

FINALCAM (Wi-Fi) APP FOR ANDRIOD (CONTD.)

Continued from previous page.

5. Camera Settings:

Camera Name (SSID) –

Change the SSID from the default setting of 'RIDE*****' and press the save icon.

Password –

Change the Password from the default setting of '12345678' and press the save icon.

Note:

- Changing the SSID or Password will disconnect the BikeCam from your phone, simply re-connect using the new details.
- Using the 'Default Settings' option to return the BikeCam to the default settings will NOT reset the SSID or Password.

Auto Recording –

This function is unavailable, as the BikeCam manages the recording mode.

Video Quality –

Adjust the video quality settings used by the BikeCam.

Format –

Format the inserted memory card within the BikeCam, this will delete all content.

Advanced Settings –

G-Sensor sensitivity:

Turn Off or adjust the sensitivity of the G Sensor used by the BikeCam to protect files.

TV Mode:

Adjust the video output when using a television to view content from your phone.

Recording file interval:

Select duration of recording length for the individual video files, the BikeCam will fill the SD Card then loop back to the beginning, overwriting the oldest files (unless protected).

Note:

The Off and 10 Minute functions listed within the FinalCam settings are unavailable and are not to be selected.

Factory Reset

Reset the device to the default settings.

Camera Info –

Displays the SW version of the BikeCam.

FINALCAM (Wi-Fi) APP FOR ANDRIOD (CONTD.)

Continued from previous page.

6. FinalCam settings

Storage Management -

Manage the storage capacity of files downloaded from the BikeCam to the Final Cam App.

Language –

Select language used within the FinalCam App.

About –

FinalCam version, with option to check whether there is an update available.

7. FinalCam home screen

Tap here to return to the home screen from the FinalCam settings or Downloads screens.

8. Downloads

Files that have been downloaded from the BikeCam can be viewed here.

See page 36 for information on the playback of video recordings.

FINALCAM (Wi-Fi) APP FOR ANDRIOD (CONTD.)

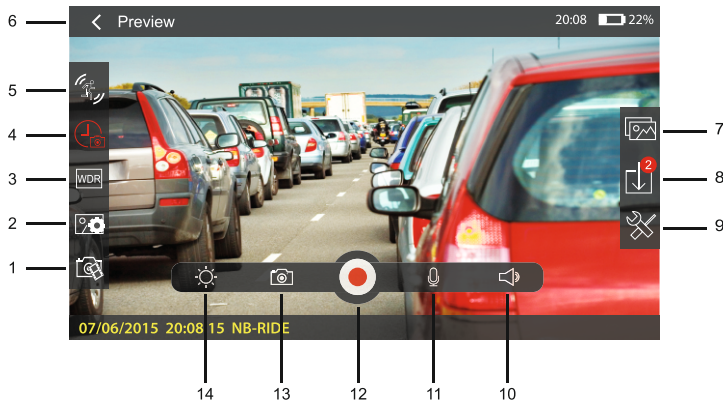
Basic operation

Tap the 'Open camera' button on the home screen to start using the BikeCam.

Please see below for a guide to the functions and features available when using the FinalCam App.

Note:

- Tap on the live image screen to bring up the menu selection as shown below.



1. FinalCam resolution
Adjust the viewing resolution of the FinalCam App.

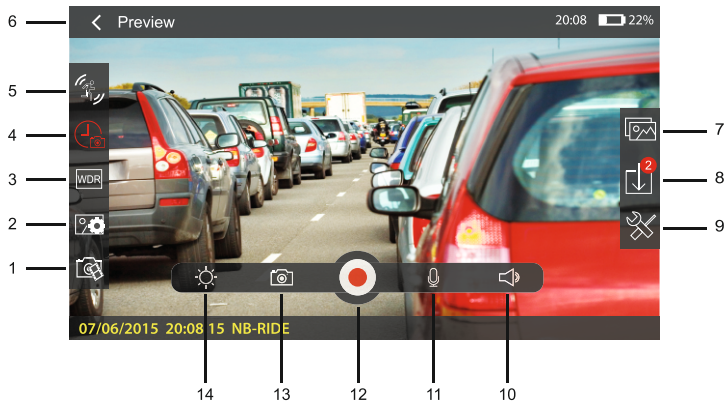
Note:

- Options available depend on the recording resolution setting of the BikeCam itself.

2. Image resolution
This function is unavailable, as the BikeCam manages the resolution used for still images.
3. WDR
This function is unavailable, as the BikeCam utilizes WDR technology permanently to optimise the image quality of the recorded files.
4. Recording length
This function is unavailable, as the BikeCam manages the recording lengths of the video files.
5. Anti-shake
This function is unavailable, as the BikeCam utilizes Anti-Shake technology permanently to optimise the image quality of the recorded files.
6. Back / Preview button
Tap here to return to the previous screen / menu.
7. Downloads directory
Tap here to open the downloads directory to view downloaded recordings or images.

FINALCAM (Wi-Fi) APP FOR ANDRIOD (CONTD.)

Continued from previous page.



8. File List
Tap to open the file list, this will list recordings or image that are stored on the memory card and have yet to be downloaded to your phone.
9. Camera Settings
Tap here to open The Camera Settings menu (described earlier).
10. Volume
Adjust the volume level of your phone.
11. Microphone
This function is unavailable, as the BikeCam manages the microphone on or off settings.
12. Record
Tap to start / stop recording.
13. Take a photo
Tap to take a still image, the image file will be saved to both the BikeCam and downloaded to your smartphone immediately.
14. Brightness
Adjust the brightness of your phones screen.

FINALCAM (Wi-Fi) APP FOR ANDRIOD (CONTD.)

Playback of video files

Once a recording has been downloaded from the BikeCam to you phone you can use the FinalCam App to playback the recording.



1. Filename
The filename of the recording being viewed.
2. Back button
Tap here to return to the previous screen / menu.
3. Favourites
Tap to download the current file to the 'Favourites' folder within the File List directory.
4. Repeat
Tap to toggle through the repeat options.
5. Delete
Tap here to delete current file.
6. Volume
Adjust the volume level of your phone.
7. Play / Pause
Tap here play / pause
8. Brightness
Adjust the brightness of your phones screen.

Notes:

- When connected to the BikeCam your mobile device will not have access to the internet.
- Should your BikeCam become unresponsive (e.g. no function or no button response) whilst using the FinalCam App please use the RESET button on the rear of the BikeCam to restart the BikeCam.
- Only a single BikeCam can be connected to the App at any one time.

FINALCAM (Wi-Fi) APP FOR iOS

The Wi-Fi function allows you to use your smartphone to view videos during recording, adjust the BikeCam settings, control the basic functions (record, play, pause, etc.) and playback videos directly to your smartphone.

The FinalCam App is available for free download from the App Store for Apple smartphones.

Installing the App on an iOS smartphone:

Open the App Store on your iOS smartphone and search for the 'FinalCam' App, tap on 'Get' to install.



Once installed, the FinalCam App will now be available on your home screen of your phone.

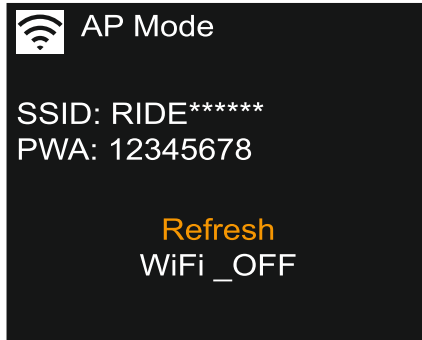


FINALCAM (Wi-Fi) APP FOR iOS (CONTD.)

Turn on the BikeCam Wi-Fi

To turn on the Wi-Fi function on the BikeCam, go to the General Settings menu, select 'Wi-Fi' and press OK. The 'On' option will be highlighted, press the OK button to confirm.

The menu window will close and the 'AP Mode' window will open, as shown below.



This screen gives the name of the BikeCam SSID (network name): 'RIDE*****' and also the password: 12345678.

Note:

- Both the network name and password can be changed using the FinalCam App, see page 42 for details.

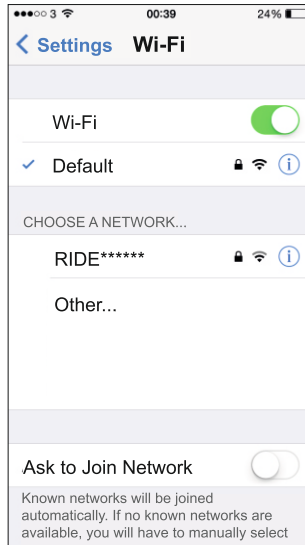
The BikeCam can now be seen as a Wi-Fi network by your phone as 'RIDE*****'.

To exit WiFi mode and resume normal BikeCam use, simply use the down button on the BikeCam to highlight 'Wi-Fi_OFF' and press OK.

FINALCAM (Wi-Fi) APP FOR iOS (CONTD.)

Connect your phone to the BikeCam

To connect your phone to the BikeCam open the Wi-Fi connections menu on your phone, the BikeCam will be shown in Wi-Fi networks list as 'RIDE*****'.



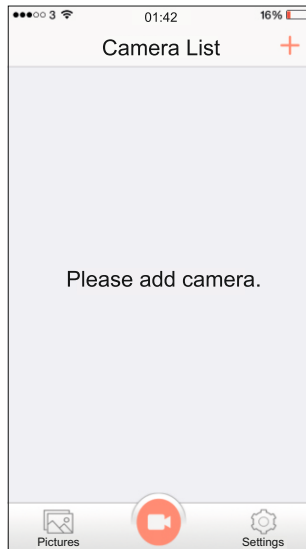
Tap on the 'RIDE*****' and when prompted enter the password '12345678', once successfully connected the 'WiFi Connected' window will appear on the BikeCam screen, as shown below.



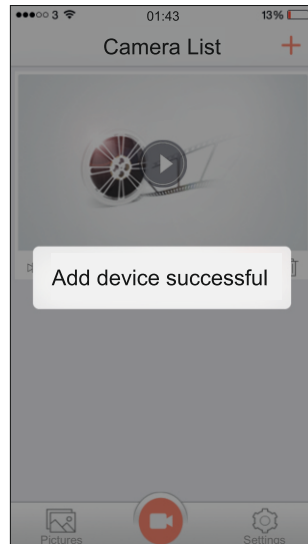
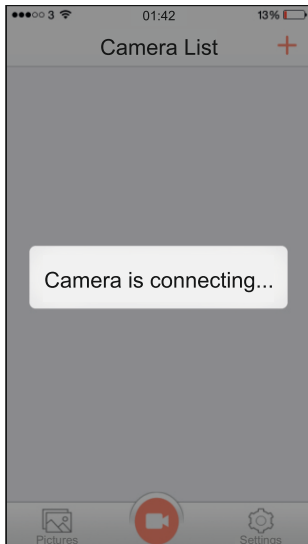
FINALCAM (Wi-Fi) APP FOR iOS (CONTD.)

Using the FinalCam App

Open the App by tapping on the FinalCam button on your phone, the first time the App is opened the 'Please add a camera' screen will appear, see image below.



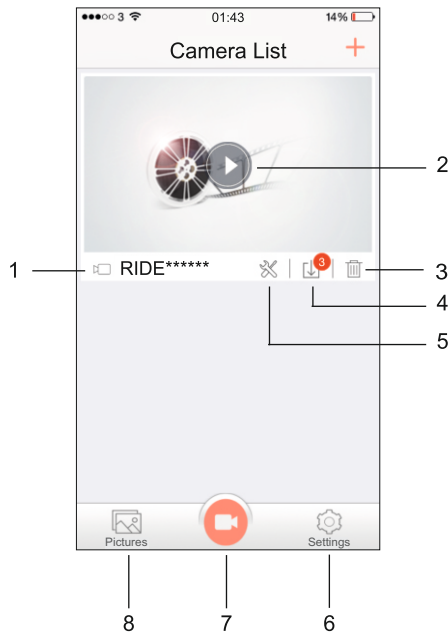
Tap on the '+' button, the 'Camera is connecting...' and then the 'Add device successful' screens will appear, as shown below.



Enter the password '12345678' and tap 'Add', the live video screen will appear. Press back on your smartphone to go to the FinalCam home screen, as shown on next page.

FINALCAM (Wi-Fi) APP FOR iOS (CONTD.)

The key below describes the various information, functions and features available within the FinalCam home screen.



1. Camera name
2. Open camera
Tap here to control the BikeCam.
3. Remove camera
Tap here to remove the BikeCam from the FinalCam App.
4. Recordings
Tap here to view the video files currently stored on the BikeCam's memory card. To playback a recording on your phone you will need to download the video file from the BikeCam, to do this simply tap on the preview window. Download to your smartphone will start immediately.

Multiple files can also be downloaded, tick the files for download and then tap the download icon in the bottom left of the screen. However this is not recommended as transfer time would be long.

Note:

- Downloading files to the FinalCam App will remove the files from the BikeCam, so they can be viewed on your smartphone directly thereafter.

FINALCAM (Wi-Fi) APP FOR iOS (CONTD.)

Continued from previous page.

5. Camera Settings:

Camera Name (SSID) –

Change the SSID from the default setting of 'RIDE*****'.

Password –

Change the Password from the default setting of '12345678'.

Note:

- Changing the SSID or Password will disconnect the BikeCam from your phone, simply re-connect using the new details.
- Using the 'Default Settings' option to return the BikeCam to the default settings will NOT reset the SSID or Password.

Auto Recording –

This function is unavailable, as the BikeCam manages the recording mode.

Video Quality –

Adjust the video quality settings used by the BikeCam.

Format –

Format the inserted memory card within the BikeCam, this will delete all content.

Advanced Settings –

G-Sensor sensitivity:

Turn Off or adjust the sensitivity of the G Sensor used by the BikeCam to protect files.

Recording file interval:

Select duration of recording length for the individual video files, the BikeCam will fill the SD Card then loop back to the beginning, overwriting the oldest files (unless protected).

Note:

The Off and 10 Minute functions listed within the FinalCam settings are unavailable and are not to be selected.

Factory Reset

Reset the device to the default settings.

Camera Info –

Displays the SW version of the BikeCam.

FINALCAM (Wi-Fi) APP FOR iOS (CONTD.)

Continued from previous page.

6. FinalCam settings

Storage Management -

Manage the storage capacity of files downloaded from the BikeCam to the Final Cam App.

General –

Turn on / off the 'Save to Album' option, when turned On images that are downloaded from the BikeCam will be saved in both the FinalCam directory and also your 'Camera Roll' album.

Language –

Select language used within the FinalCam App.

About –

FinalCam version, with option to check whether there is an update available.

7. FinalCam home screen

Tap here to return to the home screen from the FinalCam settings or Downloads screens.

8. Pictures

Files that have been downloaded from the BikeCam can be viewed here.

See page 46 for information on the playback of video recordings.

FINALCAM (Wi-Fi) APP FOR iOS (CONTD.)

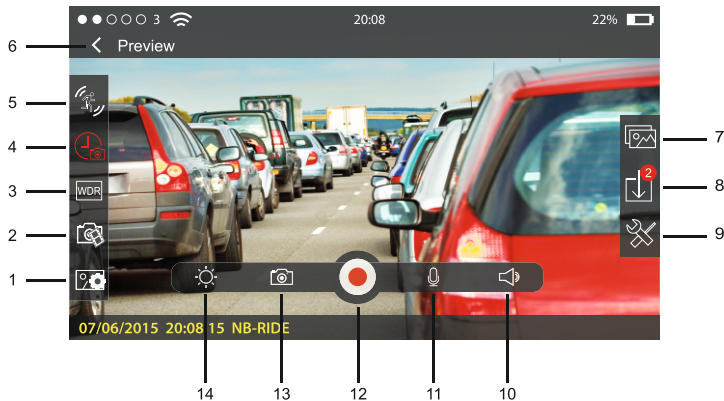
Basic operation

Tap the 'Open camera' button on the home screen to start using the BikeCam.

Please see below for a guide to the functions and features available when using the FinalCam App.

Note:

- Tap on the live image screen to bring up the menu selection as below.



1. FinalCam resolution
Adjust the viewing resolution of the FinalCam App.

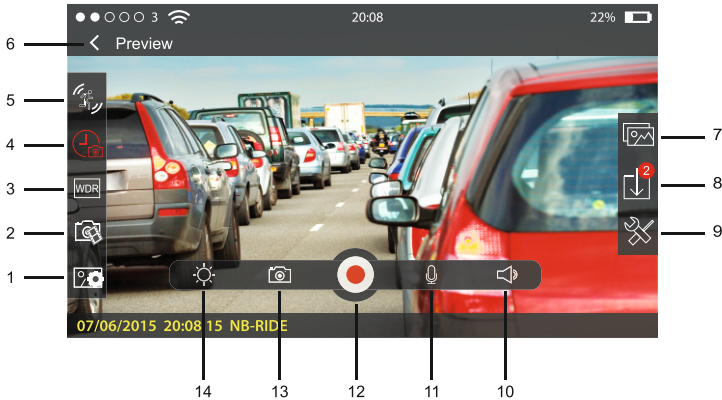
Note:

- Options available depend on the recording resolution setting of the BikeCam itself.

2. Image resolution
This function is unavailable, as the BikeCam manages the resolution used for still images.
3. WDR
This function is unavailable, as the BikeCam utilizes WDR technology permanently to optimise the image quality of the recorded files.
4. Recording length
This function is unavailable, as the BikeCam manages the recording lengths of the video files.
5. Anti-shake
This function is unavailable, as the BikeCam utilizes Anti-Shake technology permanently to optimise the image quality of the recorded files.
6. Back / Preview button
Tap here to return to the previous screen / menu.
7. Downloads directory
Tap here to open the downloads directory to view downloaded recordings or images.

FINALCAM (Wi-Fi) APP FOR iOS (CONTD.)

Continued from previous page.



8. File List
Tap to open the file list, this will list recordings or image that are stored on the memory card and have yet to be downloaded to your phone.
9. Camera Settings
Tap here to open The Camera Settings menu (described earlier).
10. Volume
Adjust the volume level of your phone.
11. Microphone
This function is unavailable, as the BikeCam manages the microphone on or off settings.
12. Record
Tap to start / stop recording.
13. Take a photo
Tap to take a still image, the image file will be saved to both the BikeCam and download to your smartphone immediately.
14. Brightness
Adjust the brightness of your phones screen.

FINALCAM (Wi-Fi) APP FOR iOS (CONTD.)

Playback of video files

Once a recording has been downloaded from the BikeCam to your phone you can use the FinalCam App to playback the recording.



1. Back button
Tap here to return to the previous screen / menu.
2. Favourites
Tap to download the current file to the 'Favourites' folder within the File List directory.
3. Repeat
Tap to toggle through the repeat options.
4. Delete
Tap here to delete current file.
5. Volume
Adjust the volume level of your phone.
6. Next
Tap here to move to the next recording.
7. Play / Pause
Tap here play / pause
8. Previous
Tap here to move to the previous recording.
9. Brightness
Adjust the brightness of your phones screen.

Notes:

- When connected to the BikeCam your mobile device will not have access to the internet.
- Should your BikeCam become unresponsive (e.g. no function or no button response) whilst using the FinalCam App please use the RESET button on the rear of the BikeCam to restart the BikeCam.
- Only a single BikeCam can be connected to the App at any one time.

MASS STORAGE & PC CAMERA

Use the supplied USB cable to connect the BikeCam to your PC, doing so will power on the camera with two functions available, as described below.

Use the UP and DOWN buttons to select required function and press OK to confirm selection.

- Mass Storage
- PC Camera

Using the BikeCam with a Windows PC:

Mass Storage

When Mass Storage is selected, the BikeCam screen will show the words 'Mass Storage' and then take the function of an SD Card reader for your PC.

An extra drive will appear, for example 'Removable Disk (D:)' and you will be able to view / manage the stored files upon the MicroSD card within the BikeCam, from your computer.

PC Camera

When PC Camera is selected, the BikeCam screen will show the words 'PC Camera' and then take the function of a webcam (no audio) for your PC.

Start the normal application upon your PC that uses a webcam (e.g. Skype) and select the BikeCam which is entitled 'CARDV'.

Note:

- Turn Off the BikeCam before disconnecting from PC.

Using the BikeCam with a MAC:

Mass Storage

When this option is selected, the BikeCam will function as a card reader for your MAC. The 'NEXTBASE' external USB disk icon will appear on your MAC and you will be able to view / manage stored files upon the MicroSD card within the BikeCam, from your Mac.

Eject the disk as you would do normally before removing the cable or turning off the BikeCam.

PC Camera

When this option is selected, the BikeCam will function as a webcam (no audio) for your Mac. Start the normal application upon your PC that uses a webcam (e.g. Skype) and select the BikeCam which is entitled 'CARDV'.

Note:

- When Mass Storage or PC Camera modes are selected the BikeCam screen will blank.
- When using PC Camera or Mass Storage functions turn Off the BikeCam before disconnecting the USB cable from your MAC.

DRIVING RECORDER PLAYER FOR WINDOWS

This section will guide you through the installation of the Driving Recorder Player software, designed to enable the viewing of recorded files as well as checking journey route / GPS data (location and speed) and G Sensor information.

MINIMUM SYSTEM REQUIREMENTS:

Operating System: Windows XP, Vista, Windows 7, Windows 8, Windows 10

Processor (CPU): Pentium III 500 MHz or Celeron at 800 MHz

Memory: 1 GB RAM

Storage: 100Mb Internal hard drive space

CD-ROM Drive: Tray / Slot Loader

Monitor/Display: 1280 x 1024

Windows Driving Recorder Player:



Insert the supplied Driving Recorder Player disk in to the CD drive, navigate and display the contents upon the disk:

- NBDVR-RIDE Instruction Manual (English)
- NBDVR-RIDE Driving Recorder Player for Windows
- NBDVR-RIDE Driving Recorder Player for Mac

Note:

- The instruction manual and installation files are all available for download from the Nextbase website: www.nextbase.co.uk, if required.

Should you experience any difficulties during installation please do not hesitate to call our English speaking technical support team on +44 (0)2920 866429, lines are open during normal business operating hours: 09:00-17:30hrs.

DRIVING RECORDER PLAYER FOR WINDOWS (CONTD.)

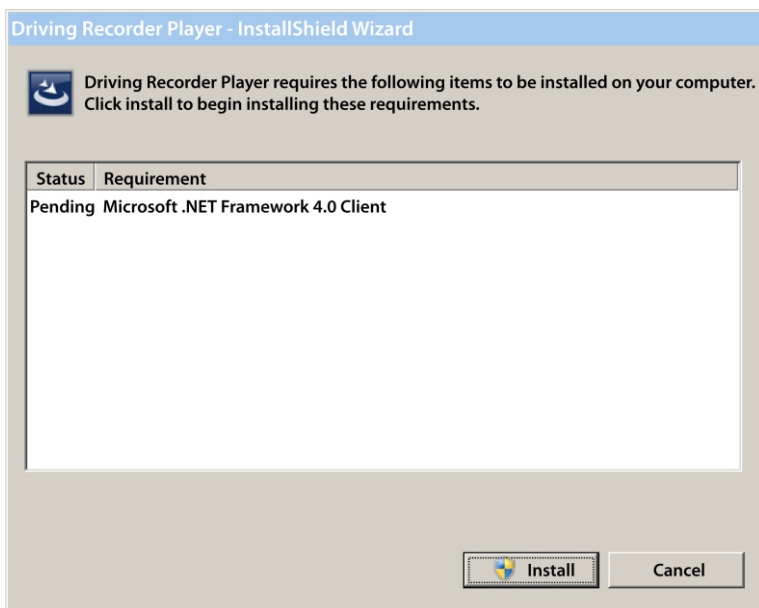
INSTALLATION:

Open the 'NBDVR-RIDE Driving Recorder Player for Windows' folder and then open the folder with required version based upon your preferred speed units (MPH or KMH).

Run the 'setup.exe', for some operating systems a security warning may appear, click 'RUN' to proceed.

To install this application software you need to have 'Microsoft.NET Framework 4.0 Client' installed upon your PC. Should this not already be installed, a window will open prompting you to confirm the automatic installation from Microsoft, as shown below.

This is normal and enables the Driving Recorder Player software to run.



Please press 'Install' to proceed, this installation process can take some time. After installation of 'Microsoft.NET Framework 4.0 Client', you may be asked to reboot your PC in order to continue the Driving Player Recorder software installation.

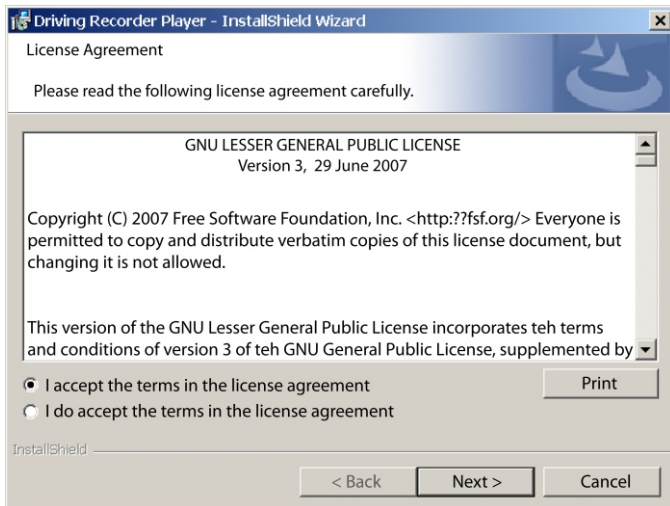
On completion of the Microsoft.NET Framework installation, the Driving Recorder Player installation will begin.

DRIVING RECORDER PLAYER FOR WINDOWS (CONTD.)

If your PC already had 'Microsoft.NET Framework 4.0 Client' installed then the 'Welcome to the InstallShield' window will open, as shown below.



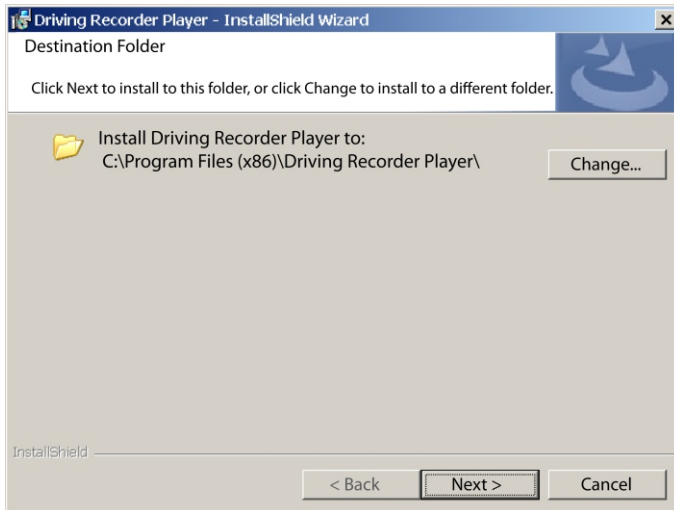
Press 'Next' to continue, the 'License Agreement' window will open, as shown below.



Check the 'Accept' button and press 'Next' to proceed.

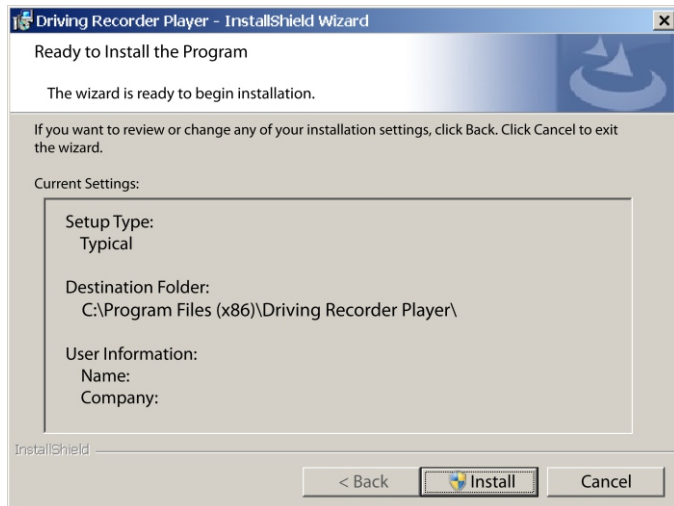
DRIVING RECORDER PLAYER FOR WINDOWS (CONTD.)

The 'Destination Folder' window will open, as shown below.



Choose a destination folder should you not want files saved to the default folder within the Program Files directory.

Press 'Next' to proceed, the 'Ready to Install the Program' window will open, as shown below.



Click 'Install' to begin the installation.

DRIVING RECORDER PLAYER FOR WINDOWS (CONTD.)

The 'Installing Driving Recorder Player' window will open. During installation the status window will be on screen, as shown below.



Once installation is complete the 'InstallShield Wizard Completed' window will open, as shown below.



Installation now is complete, press 'Finish' to close the InstallShield Wizard window.

The Driving Recorder Player icon will now be available on your desktop.

Note:

- For some operating systems additional / different steps may be required.
- Some anti-virus software may consider the installation of this software as a threat, this is normal and not a cause for concern, please toggle off the anti-virus software, or choose to allow the installation to continue.

DRIVING RECORDER PLAYER FOR WINDOWS (CONTD.)

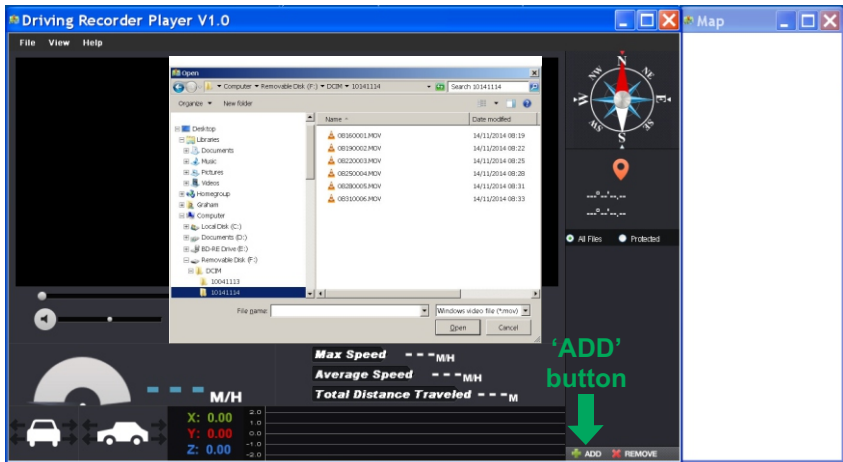
USING THE DRIVING RECORDER PLAYER:

Connect the BikeCam to your PC using the supplied USB cable and select Mass Storage by pressing 'OK' on your BikeCam.

Alternatively remove the MicroSD Card from your BikeCam and using a suitable MicroSD adaptor insert it directly to the card reader on your PC.

Close any pop up messages and/or any media players which may automatically open when video or photo files stored upon a memory card are detected. Open the Driving Recorder Player software using the shortcut on your desktop.

To add videos for viewing with the Driving Recorder Player click on the '+ ADD' button located in the bottom right hand corner of the main Driving Recorder Player window, this will open a new window allowing you to locate the required video files, see image below.



Once you have located and highlighted the required folder, for example: Removable Disk (D:) - RIDE - 10141114, then highlight the required video clip recordings and click 'Open', this will add the selected files to the Driving Recorder Player file list.

It is the same principal whether connecting the BikeCam via the USB cable (see page 47) or by placing the memory card directly into your PC's card reader. The only difference being is that the memory card would be shown as: SD (D:) within the directory list.

Playback:

Click on a file within the file list window to start playback, during playback use the player controls to: pause/play, forward, reverse as required.

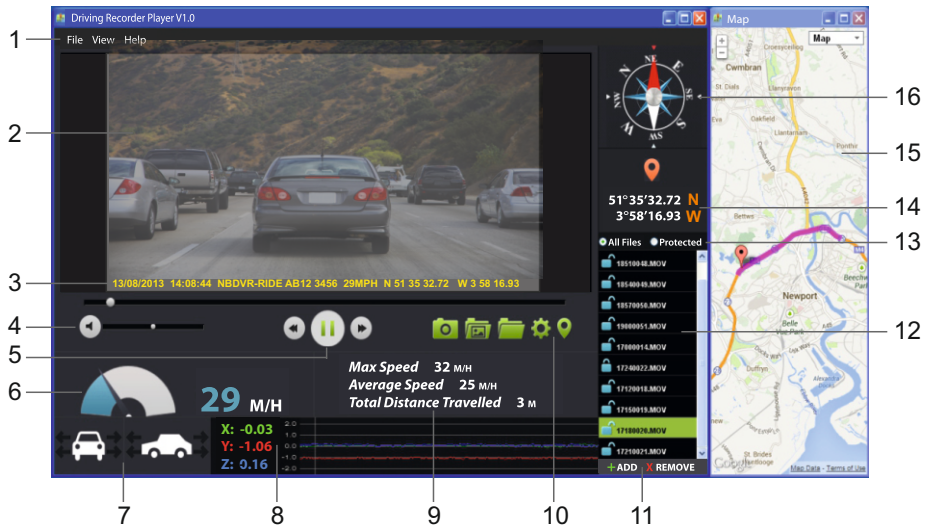
Note:

- Playback via the USB Cable may result in playback jumping / freezing due to the transfer rate of data, it is recommended that the files are viewed directly from your PC's card reader - if you do not have a card reader available, please copy files from the BikeCam to your PC and use these for playback.
- Early Windows operating systems may require installation of video codec software to enable video playback. Please visit <http://www.nextbase.co.uk> to download the 'PC Codec Pack (PC version)', installation instructions are also available within the downloaded file.

DRIVING RECORDER PLAYER FOR WINDOWS (CONTD.)

FEATURES & CONTROLS

The key below explains the various information displayed within the Driving Recorder Player when using a Windows platform.



1. Player settings

File: Browse for files, change settings for units of speed and language.

View: Open / close map window.

Help: Player version information.

2. Playback window of selected video file

View current video, to make full screen double-click on the top of the window.

3. Date / Time / Model / Vehicle Registration / Speed / GPS Co-ordinates Stamp

Data saved to the recorded file, this content will vary depending upon the BikeCam settings and availability of GPS signal during recording.

4. Volume

Adjust playback volume.

5. Video playback control buttons

Play / Pause, fast forward and rewind current file, this function is not available on Windows XP.

6. Speed display

Displays current speed.

7. G Force display

Displays direction of G Force on the vehicle.

8. G Sensor data

Displays data recorded by the G Sensor across the three axis.

X = left/right, Y = up/down and Z = acceleration & deceleration.

9. Journey statistics

Displays maximum speed, average speed and total distance travelled.

DRIVING RECORDER PLAYER FOR WINDOWS (CONTD.)

10. Driving Recorder Player controls



Screen Capture, this will create a still image for each frame of the image seen within the playback window.



Open screen capture folder.



Browse for files stored on your computer.



Open settings window, adjust language and unit of speed.



Open / Close the Map window.

11. Add / Remove files

Used to add and remove selected videos to the file list.

12. File list

Displays videos currently within the file list.

13. Display all or protected files

Select whether to display all files or protected files only.

14. GPS co-ordinates

Displays current GPS co-ordinates, only available when the video files are recorded when a satellite connection was present.

15. Map

Displays route travelled on map, only available when the video was recorded when a satellite connection was present.

16. Compass

Displays current direction, only available when the video was recorded when a satellite connection was present.

Note:

- The driving recorder player will only open when an internet connection is available, due to the Google Map function within Windows, should you want to view recorded files please open with another video playback program, e.g. QuickTime or VLC.
- Functions and operation of the driving Recorder Player may vary dependant on your PC's operating system.
- GPS data will only be displayed when a GPS signal was present during the recording.

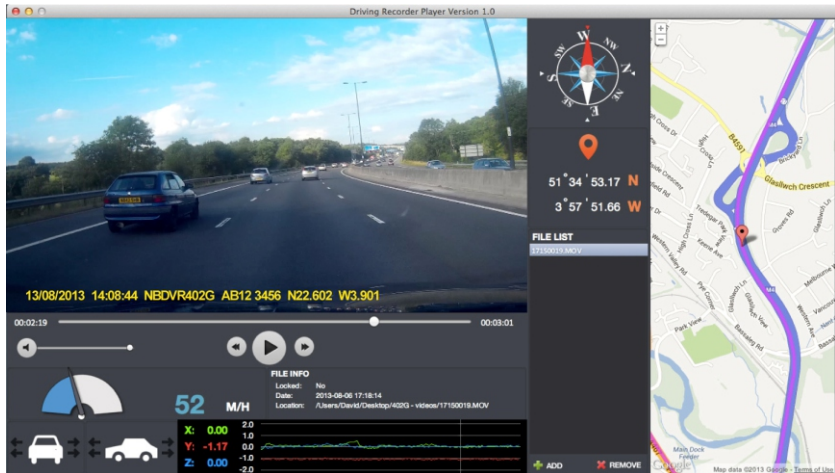
DRIVING RECORDER PLAYER FOR MAC

This section will guide you through the installation of the Driving Recorder Player software, designed to enable the viewing of recorded files as well as checking journey route / GPS data (location and speed) and G Sensor information.

MINIMUM SYSTEM REQUIREMENTS:

OS X 10.7 and above

Mac Driving Recorder Player:



- NBDVR-RIDE Instruction Manual (English)
- NBDVR-RIDE Driving Recorder Player for Windows
- NBDVR-RIDE Driving Recorder Player for Mac

Note:

- The instruction manual and installation files are all available for download from the Nextbase website: www.nextbase.co.uk, if required.

Should you experience any difficulties during installation please do not hesitate to call our English speaking technical support team on +44 (0)2920 866429, lines are open during normal business operating hours: 09:00-17:30hrs.

DRIVING RECORDER PLAYER FOR MAC (CONTD.)

INSTALLATION

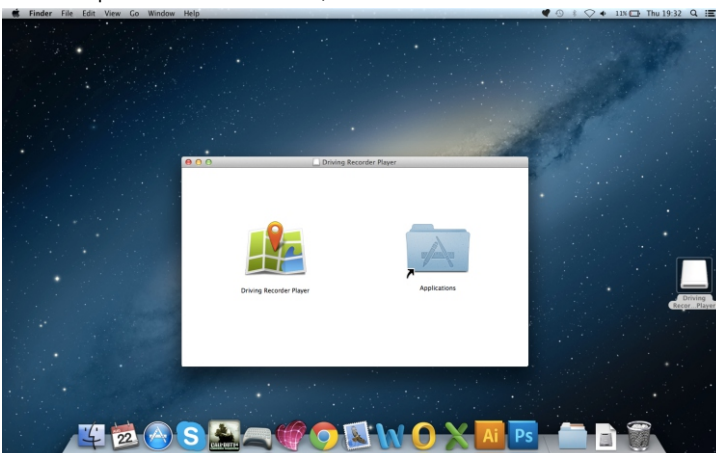
Open the 'NBDVR-RIDE Driving Recorder Player for Mac' folder and then open the folder with required version based upon your preferred speed units (MPH or KMH).

Run the 'Driving Recorder Player for MAC' .dmg file, this will place the 'Driving Recorder Player' volume on your desktop, as shown below.



Alternatively, once the required Driving Recorder Player software has been downloaded from the Nextbase website open the 'Downloads' folder on your Mac. The software is saved in a compressed (.zip) folder, free de-compression applications are readily available, for example 'The Unarchiver' available from the Mac Appstore. Once the .zip folder has been uncompressed the full folder will appear in your downloads folder. Open the folder and run the 'Driving Recorder Player for MAC' .dmg file.

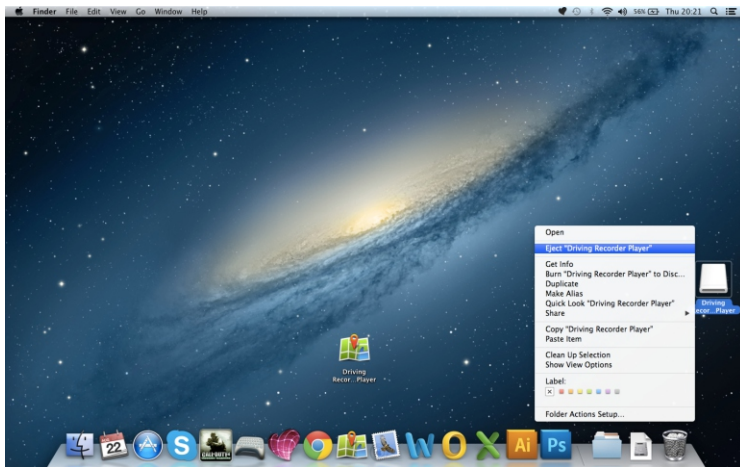
Open the volume on your desktop by either double-clicking or right-click, select open and right click once more. This will open the volume window, as shown below.



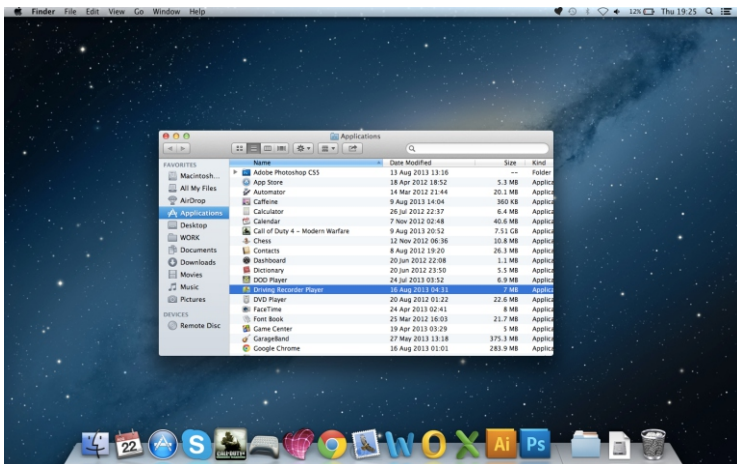
Drag the Driving Recorder Player into the Applications folder, a sound will be heard to confirm application has been installed.

DRIVING RECORDER PLAYER FOR MAC (CONTD.)

The Driving Recorder Player 'volume' can now be ejected, right-click, select Eject 'Driving Recorder Player' and right-click once more, see image below.



The 'Driving Recorder Player' can also be found within the Applications List, see below.



At this point may also want to drag a copy onto your desktop, this can then be used as a desktop shortcut or placed on your Dock.

DRIVING RECORDER PLAYER FOR MAC (CONTD.)

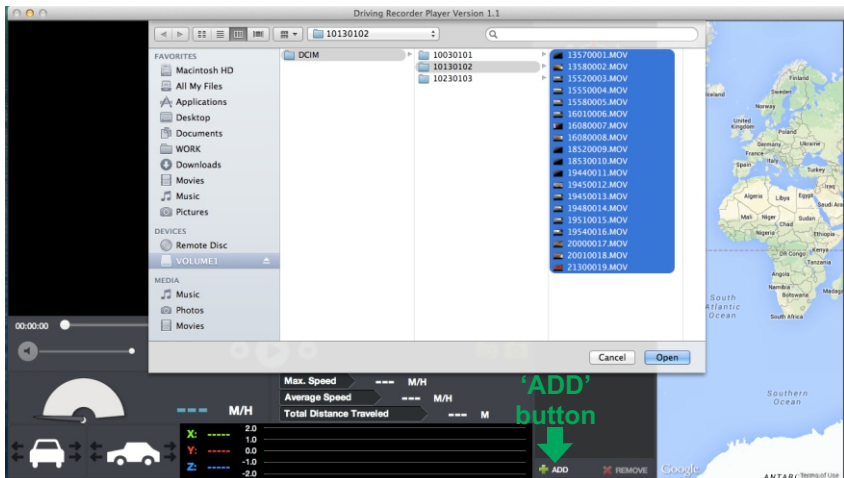
USING THE DRIVING RECORDER PLAYER:

Connect the BikeCam to your Mac using the supplied USB cable and select Mass Storage by pressing 'OK' on your BikeCam.

Alternatively remove the MicroSD Card from your BikeCam and using a suitable MicroSD adaptor insert it directly to the card reader on your mac.

Close any pop up messages and/or any media players which may automatically open when video or photo files stored upon a memory card are detected. Open the Driving Recorder Player software using the shortcut on your desktop.

To add videos for viewing with the Driving Recorder Player click on the '+ ADD' button located in the bottom right hand corner of the main Driving Recorder Player window, this will open a new window allowing you to locate the required video files, see image below.



Once you have located and highlighted the required folder, for example:

VOLUME1 - RIDE - 10130102, then highlight the required video clip recordings and click 'Open', this will add the selected files to the Driving Recorder Player file list.

It is the same principal whether connecting the BikeCam via the USB cable (see Mass Storage page 47) or by placing the memory card (using a suitable MicroSD adaptor) directly into your Mac's card reader.

Playback:

Click on a file within the file list window to start playback, during playback use the player controls to: pause/play, forward, reverse as required.

Note:

- Playback via the USB Cable may result in playback jumping / freezing due to the transfer rate of data, it is recommended that the files are viewed directly from your Mac's card reader – if you do not have a card reader available, please copy files from the BikeCam to your PC and use these for playback.

DRIVING RECORDER PLAYER FOR MAC (CONTD.)

FEATURES & CONTROLS

The key below explains the various information displayed within the Driving Recorder Player when using a Mac platform.



1. Playback window of selected video file

View current video.

2. Date / Time / Model / Vehicle Registration / Speed / GPS Co-ordinates Stamp

Data saved to the recorded file, this content will vary depending BikeCam settings and availability of GPS signal during recording.

3. Volume

Adjust playback volume.

4. Video playback control buttons

Play / Pause, fast forward and rewind current file.

5. Speed display

Displays current speed.

6. G Force display

Displays direction of G Force on the vehicle.

7. G Sensor data

Displays data recorded by the G Sensor across the three axis.
X = left/right, Y = up/down and Z = acceleration & deceleration.

8. File Info

Displays current file information.


9. Add / Remove files

Browse for files stored on your computer, add / remove selected videos to and from the file list.

DRIVING RECORDER PLAYER FOR MAC (CONTD.)



10. Screen Capture

 Screen Capture, this will create a still image for each frame of image within the playback window.

 Open screen capture folder to view images.

11. File List

Displays videos currently within the file list.

12. GPS co-ordinates

Displays current GPS co-ordinates, only available when the video files were recorded when satellite connection was present.

13. Map

Displays route travelled on map, only available when the video was recorded when a satellite connection was present.

14. Compass

Displays current direction, only available when the video was recorded when a satellite connection was present.

Note:

- The driving recorder player will only open display an active map when an internet connection is available.
- Functions and operation of the driving Recorder Player may vary dependant on your PC's operating system.
- GPS data will only be displayed when a GPS signal was present during the recording.

TROUBLE SHOOTING

PROBLEM	SOLUTION
Video Image is blurred.	Remove the protective lens cover, clean the lens, clean the wind deflector screen!
I can not insert the Micro SD card.	Micro SD card are very small and require delicate use. Align the card with the diagram shown upon the device and insert the card until you feel a slight spring resistance. You now need to push the card, using your finger nail, until you hear and feel a small latch. Release pressure and the card will stay retained within the device. Use the edge of a small coin if you have difficulty.
I can not remove the Micro SD card.	With the card previously installed, you now need to push the card further inwards slightly, using your finger nail, until you hear and feel a small latch. Use the edge of a small coin if you have difficulty. Release pressure and the card will spring out sufficiently for you to take hold of it.
Video files can not be played.	The video files from the BikeCam are in MOV format and may not be compatible with your PC if suitable playback software is not installed. Install the supplied Driver Recorder Player software and the additional Codecs if necessary.
Video file playback is jumpy.	Remove the SD card and reformat to remove non-contiguous files. For best recording use a branded class 10 type (30MB/s) SD card of 8 to 32GB recommended size. Recommended video playback software is the supplied Driver Recorder Player. Playback. PC may not be sufficient for the playback task, try an different PC. Copy video files onto the PC / Mac for playback. It is not recommended to use the BikeCam as a card reader via the USB Cable for playback purposes.
Playback upon the Driver Recorder Player is jumpy.	The Codecs upon your PC may not be compatible or the latest standard. Download the latest Codecs from: http://www.nextbase.co.uk
The sound is not synchronised with video during playback.	The Codecs upon your PC may not be compatible or the latest standard. Download the latest Codecs from: http://www.nextbase.co.uk
Video has no sound.	Ensure that "Record Audio" setting is turned ON within the Video Menu. Note: Audio will be quiet on BikeCam.
Photograph is blurred.	Hold the camera still whilst taking the photo. Please be aware the photo is taken around 1 second after the shutter noise is heard.
I can only record a few minutes of video on my Micro SD card.	Change the video length to a smaller size. Increase the size of the MicroSD card. Max 32GB. Format the SD card on the BkeCam.
Mass Storage or PC Camera function does not work.	The Mass Storage and PC Camara functions work on both Windows and Mac. Restart the PC, as this may be required for the necessary driver to be loaded correctly. Disconnect and reconnect the BikeCam. Contact NEXTBASE for the required driver.
My BikeCam shuts down by itself after a while.	Either the battery has gone flat, or there is no power to the BikeCam and the AutoPower Off period (which is in the General Settings Menu) has been triggered.
The Driving Recorder Player will not open.	For Windows operating systems the player requires an internet connection to open, if this is not available please view files using alternative playback software, i.e. QuickTime or VLC.

TROUBLE SHOOTING (CONTD.)

PROBLEM	SOLUTION
No power to my BikeCam, but it works upon my PC.	The cigarette power cable or hard-wire cable is not working. Inspect the fuse in the Car Power plug / hard-wire. Replacement fuse = 2A 20mm type. If the fuse is found to be blown, inspect the power cable for damage which may have caused the fuse blow.
The SD card in my BikeCam can not be read.	Use a good quality branded SD card between 4GB and 32GB and format the card from within the SETUP menu of the BikeCam.
I can't delete files on my SD card within the BikeCam.	Check to see if these files are 'protected', if so please follow instructions to 'un-protect'.
The screen blanks after a few minutes upon my BikeCam.	The screen saver is set to ON. Change settings to OFF if required. Default setting is off.
I get the message "Cluster size wrong. Please format SD card" on screen.	The SD card has been formatted in another device and the Cluster Size is not compatible. Simply use the MENU, SETUP option to re-format the SD card from within the BikeCam.
The BikeCam can not lock onto satellite.	After power on and with the device mounted with clear view of the sky it can take up to 10 minutes to find the three satellites required to achieve a stable signal. Reception can also be affected by atmospheric conditions and the proximity of buildings / trees obscuring the sky.
The battery only last 30 seconds.	Please connect the Hard-wire cable, Cigarette Power Cable or USB Cable to a PC to apply power to your BikeCam. Charging takes approximately 8 hours and a full charge is indicated when the Blue LED goes out.
The battery only lasts 6 minutes.	This is normal, the battery design allows the 'Auto Power Off' feature to function in event of power loss within the vehicle. It is not intended as an alternative power source to replace the supplied Cigarette Power cable / Hard-wire cable.
I get the message "Card Error" on screen.	The SD card has become unuseable by the BikeCam. Remove useful files using your PC and then perform a "FORMAT" upon the SD card from within the BikeCam SETUP menu.
When I press the MENU button nothing happens.	This is normal during recording. Stop the recording before pressing the MENU button.
Downloading files from www.nextbase.co.uk using Google Chrome results in a Malicious Software message.	This is not a cause for concern, simply go to the settings within Google Chrome and turn off the malicious software protection temporarily to download and install the software. Reinstate previous Google Chrome settings thereafter.
The date & time on my BikeCam do not adjust for Daylight Savings time.	Correct. The BikeCam will pick up GMT from the satellite signal. Adjust for Timezone location and Summer Time in the General Settings Menu.
Wi-Fi App	2 devices can not connect to the BikeCam to review videos. Correct this is normal. The second device will become disconnected automatically.
Wi-Fi App	I have changed my BikeCam SSID and password then lost them. How can I reset ? No need, when you turn the Wi-Fi on within the BikeCam the new SSID and password are shown on screen.

TROUBLE SHOOTING (CONTD.)

PROBLEM	SOLUTION
The LCD screen on my BikeCam gets condensation inside.	Not a serious issue. This is due to a combination of warm air inside the BikeCam and the cold air outside, especially whilst riding with the wind chill. Leaving the BikeCam indoors overnight with the SD card slot uncovered in a dry environment will reduce the moisture inside the BikeCam.

NOTES

NOTES

NEXT BASE

www.nextbase.co.uk



NBDVR-RIDE-IM-ENG-R01